

IT'S TIME TO GET SLIM!

The LIPOcel™ procedure guarantees high safety by using a noninvasive method, based on HIFU (High-Intensity Focused Ultrasound), so as not to damage the peripheral tissues, and transmits energy precisely only to the subcutaneous fat layer.

LIPOcel™



Features of LIPOcel™

- 01 **More Effectiveness**
The high temperature of the target raises the temperature of subcutaneous fat cells to over 70 degrees by using powerful energy up to a maximum of 150 J.
- 02 **Minimal Pain : Chill Cartridge**
Cooling on the approximal surface of skin by using Chill Cartridge (5 degrees).
- 03 **No Downtime : No hurdles for routine life**
The epidermis always remains safe because a direct focal zone is formed only on subcutaneous fat layers below 1.3 cm.
- 04 **Faster Treatment : No Anesthesia**
The absence of anesthesia allows the whole procedure to be completed within 30 minutes.
- 05 **Minimal Running Cost : Amazing Cartridge Lifespan**
The Deaerating System removes life-shortening causes such as bubbles and timplusive collapse.

LIPOcel™

Body Specification

Frequency	2MHz
Energy	Max. 150J/cm ²
LCD	10.2 inch, touchscreen control panel display
Size	438mm(W) x 580mm(D) x 1080mm(H)
Weight	80kg

Handpiece Specification

Switch	Finger switch
Treatment Zone	30mm X 30mm
Focus Depth	13mm
Cooling	Chill cartridge for contact cooling(5°C)
Size	92mm(W) x 89mm(D) x 270mm(H)
Weight	1.5kg / 2kg (with cartridge)

For Export



Jeisys

Website. www.jeisy.com Facebook. www.facebook.com/jeisymedical E-mail. trade@jeisy.com Tel. +82.2.2603.6417 Fax. +82.2.2603.6447
Jeisys Medical Inc. #307, Daeryung techno town 8-cha, 96, Gamasan-ro, Geumcheon-gu, Seoul, Korea • Copyright ©Jeisys Medical Inc. • Specifications subject to change without notice.

Jeisys



Fat Reduction HIFU System

LIPOcel™

LIPOfcel™

Non-invasive Fat Reduction HIFU System

Technology of Contact Cooling (Handpiece)



“ This technology will reduce pain in the epidermal area and nerve area. And it can make it possible to have higher energy delivery ! ”

Contact Cooling of LIPOfcel™

This is the most important technology and mechanism. From the mechanism of contact cooling, this will reduce pain in the epidermal area and nerve area. And it can make it possible to have higher energy delivery.

Advantage of Contact Cooling

LIPOfcel™ has a very special contact cooling system. It can reduce the handpiece surface temperature down to 5 °C.

Contact Cooling

Handpiece surface temperature
[5°C]

Effectiveness of Contact Cooling

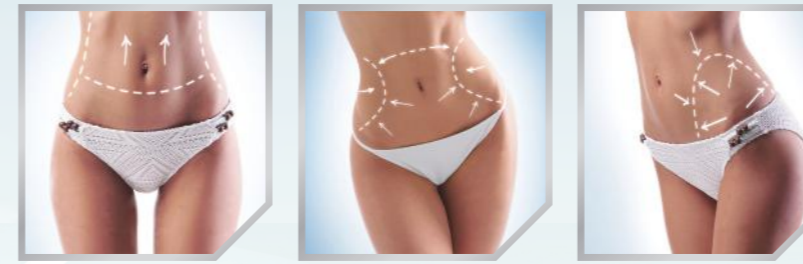
Protect Epidermis

Reduce Pain

Higher Energy

More Effective Result

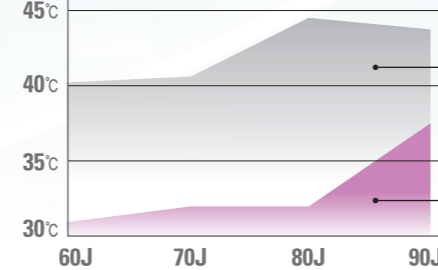
No pain, No fat again! Best way to get rid of those Love Handles!



IT'S TIME TO GET SLIM!
LIPOfcel™

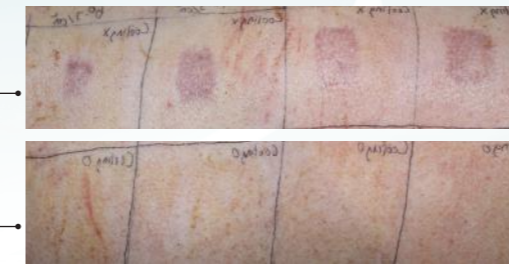
Contact Cooling | Protect Epidermis

Temperature change of epidermis according to HIFU Fat Reduction



Without Cooling(20c)

With Cooling(5c) LIPOfcel



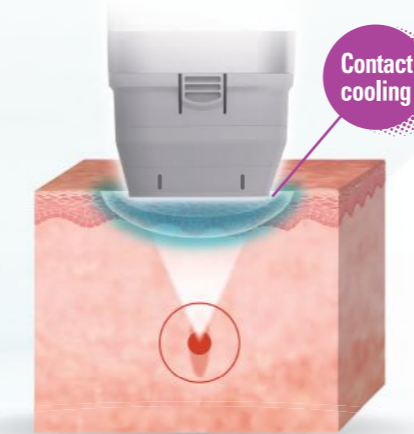
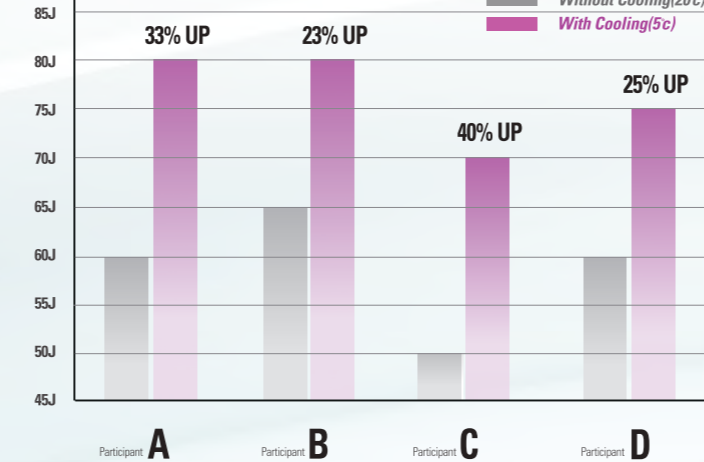
Thermal Damage

No Thermal Damage

- Cooling Temp 5 ° and 20 ° in the same energy to the skin in a procedure, Cooling of the two-shot 5 ° continuous thermal damage during surgery is one treatment Cooling thermal damage occurs in the epidermis of 20 ° can not see increments to
- 60 ~ 90J 10J continuously in the same position after setting the temperature to 20 ° and Cooling 5 ° 2pass procedure after measuring the skin temperature. Infer the temperature of the skin and relevance of responses

Contact Cooling | Higher Energy

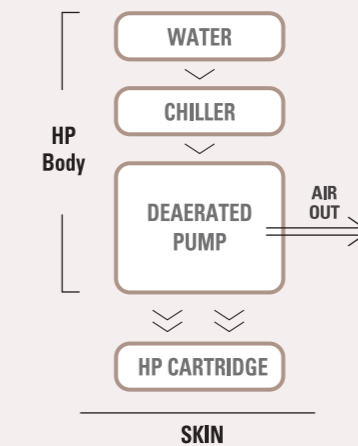
Energy level compared with temperature



Contact cooling

- Compared with four different patients by using maximum energy output for each patient, between when contact cooling was applied to them and when it was not applied to them. As a result, an increased energy of 15 to 20 J/cm² could be used to patients when contact cooling was ON than when it was OFF. Contact cooling helps patients feel less pain, which enables a higher level of energy use.

Deaerating System(HP)



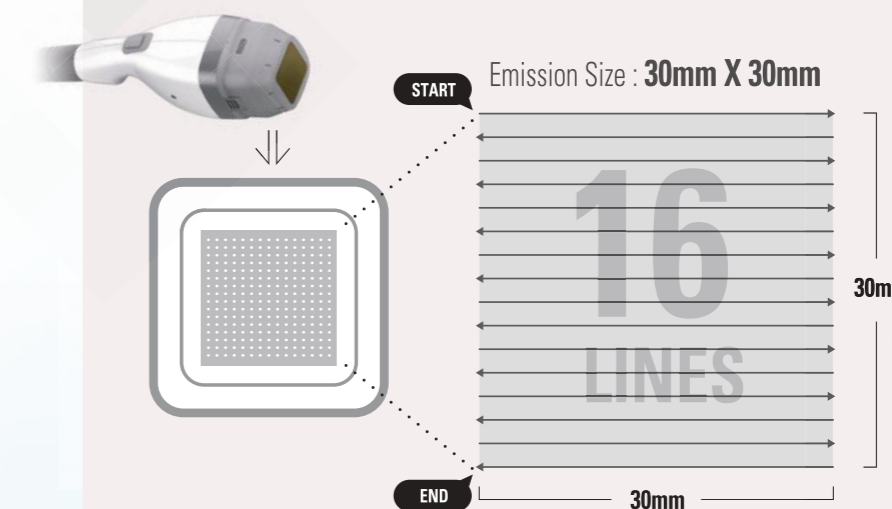
* HP : Handpiece

Effects of Deaerating System



- LIPOfcel™ successfully obtained a remarkable improvement in the stability of energy and Cartridge lifespan by applying a Deaerating System whose use was previously limited to specific areas such as HIFU in cancer treatment. * First Technology in Aesthetic Field

Faster Treatment - 16 Lines in ONE SHOT(HIFU)



- A wider area of ultrasound emission and a quick movement of the transducer enable even faster and more efficient treatment.

